

ALDECO

VOVA  
*Collection*





# veva

*Collection*

WWW.ALDECO.PT



ECLECTIC.  
ART DECO.  
CONTEMPORARY.  
ETHNIC.

VEVA, this collection takes us on a passionate journey inspired by an unusually surprising Portuguese woman, a great lady of her time who broke standards and challenged taboos like no one else in that “well-behaved” Portugal, that lived, astonished, with Veva’s fascinating personality. An eccentric woman who walks her leopard on a leash through the streets of Lisbon in the 1920s, organizes exuberant parties at her house in the capital, travels alone around the world, hunts in Africa and lives with the high European aristocracy or even the British Royal Family. Married to an influential man and twice ambassador in London, she is also a novelist and playwright, an intellectual who publishes opinion articles on sociology and international politics. She likes to tease and embarrass Salazar.

Feminine, irreverent, modernist, this is how we define VEVA, the intrepid and fascinating writer who defied the constraints imposed by Portuguese society during the 20<sup>th</sup> century dictatorship.

A feminist far ahead of her time, with an exuberant and

enigmatic personality passionate about Theatre and Art. We pay tribute to a woman who saw herself as a swan and a butterfly, elegant and capable of reinventing herself. The VEVA collection reflects this same scenographic theatricality and boldness, creatively exploring the decorative elements of the golden period of Art Deco and the metamorphosis of motifs, the richness of materials and the eclecticism of different cultures, the result of travels to different continents and contact with various ethnicities, modern artists and reformist thoughts. We dive into a new sensitivity with warm and natural tones, through a deep respect for materials and the exaltation of nature and the environment, a sensitivity associated with touch, the discovery of sensations and spirituality.

We weave and embroider these stories together, building connections and preserving the richness of a cultural identity that is intended to be timeless.

Come with us and let yourself be seduced by the sensuality of VEVA.





This collection is a tribute to our inspiring muse  
Veva de Lima.  
A Woman who approached life as if she lived in a stage!  
Truly fascinating and original!

*Susana Dias*

Brand & Creative Director  
Susana Dias

VEVA, esta colección nos lleva a un viaje apasionante inspirado en una portuguesa inusualmente sorprendente, una gran dama de su tiempo que rompió estándares y desafió tabúes como nadie en ese Portugal bien educado que vivía asombrado con la fascinante personalidad de Veva.

Una mujer excéntrica que pasea a su leopardo con correa por las calles de la Lisboa de los años 20, organiza fiestas exuberantes en su casa de la capital, viaja sola por el mundo, persigue caza mayor en África y baila con la alta aristocracia europea, incluso con la familia real británica. Casada con un hombre influyente y dos veces embajador en Londres, es también novelista y dramaturga, una intelectual que publica artículos de opinión sobre sociología y política internacional. Le gusta provocar y avergonzar a Salazar.

Femenina, irreverente, modernista, así definimos a VEVA, la intrépida y fascinante escritora que desafió las limitaciones impuestas por la sociedad portuguesa durante la dictadura del siglo XX. Una feminista adelantada a su tiempo, con una personalidad exuberante y enigmática

apasionada por el Teatro y el Arte. Rendimos homenaje a una mujer que se veía a sí misma como un cisne y una mariposa, elegante y capaz de reinventarse.

La colección VEVA refleja esta misma teatralidad y audacia escenográfica, explorando creativamente los elementos decorativos de la época dorada del Art Déco y la metamorfosis de los motivos, la riqueza de materiales y el eclecticismo de diferentes culturas, resultado de viajes a diferentes continentes y contacto con diversas etnias, artistas modernos y pensamientos reformistas. Nos adentramos en una nueva sensibilidad con tonos cálidos y naturales, a través del profundo respeto por los materiales y la exaltación de la naturaleza y el medio ambiente, una sensibilidad asociada al tacto, la exploración de las sensaciones y de la espiritualidad.

Tejemos y bordamos estas historias juntos, construyendo conexiones y preservando el patrimonio de una identidad cultural que pretende ser atemporal.

Ven con nosotros y déjate seducir por la sensualidad de VEVA.

VEVA, cette collection nous emmène dans un voyage passionné inspiré par une Portugaise inhabituellement surprenante, une grande dame de son temps qui a brisé les normes et défié les tabous comme personne dans un Portugal sage qui a vécu, étonné, avec la personnalité fascinante de Veva.

Une femme excentrique qui promène son léopard en laisse dans les rues de Lisbonne dans les années 1920, organise des fêtes exubérantes dans sa maison de la capitale, voyage seule à travers le monde, chasse le gros gibier en Afrique et vit avec la haute aristocratie européenne ou même la famille royale britannique. Mariée à un homme influent, deux fois ambassadeur à Londres, Veva est également romancière et dramaturge, intellectuelle qui publie des articles d'opinion sur la sociologie et la politique internationale. Veva aime provoquer et embarrasser Salazar.

Féminine, irrévérencieuse et moderniste, c'est ainsi que nous définissons VEVA, l'écrivaine intrépide et fascinant qui a défié les contraintes imposées par la société portugaise pendant la dictature du XX<sup>e</sup> siècle. Une féministe très en avance sur son temps, avec une

personnalité exubérante et énigmatique, passionnée de Théâtre et d'art. Nous rendons hommage à une femme qui se voyait comme un cygne et un papillon, élégante et capable de se réinventer.

La collection VEVA reflète cette même théâtralité et audace scénographique, explorant de manière créative les éléments décoratifs de la période dorée de l'Art Déco et la métamorphose des motifs, la richesse des matériaux et l'éclectisme des différentes cultures, résultat de voyages vers différents continents et de contacts avec diverses ethnies, artistes modernes et pensées réformistes. Nous plongeons dans une nouvelle sensibilité aux tons chauds et naturels dans un profond respect des matériaux et de l'exaltation de la nature et de l'environnement. Il s'agit d'une sensibilité associée au toucher, à l'exploration de la sensation et à la spiritualité.

Nous tissons et brodons ces histoires ensemble, établissant des liens et préservant la richesse d'une identité culturelle qui se veut intemporelle.

Rejoignez-nous et laissez-vous séduire par la sensualité de VEVA.





VEVA, esta coleção conduz-nos por uma viagem apaixonante inspirada numa mulher portuguesa invulgarmente surpreendente, uma grande senhora do seu tempo que quebrou padrões e desafiou tabus como ninguém nesse Portugal bem-comportado que conviveu, estupefacto, com a personalidade fascinante de Veva. Uma mulher excêntrica que passeia o seu leopardo à trela pelas ruas de Lisboa dos anos de 1920, organiza festas exuberantes na sua casa da capital, viaja sozinha pelo mundo, persegue caça grossa em África e convive com a alta aristocracia europeia ou até mesmo a família real britânica. Casada com um homem influente e por duas vezes embaixador em Londres, é também novelista e dramaturga, uma intelectual que publica artigos de opinião sobre sociologia e política internacional. Gosta de provocar e embaraçar Salazar. Feminina, irreverente, modernista, é assim que definimos VEVA, a intrépida e fascinante escritora que desafiou os constrangimentos impostos pela sociedade portuguesa durante a ditadura do século XX. Uma feminista muito à frente do seu tempo, com uma personalidade exuberante e enigmática apaixonada por Teatro e Arte. Prestamos

tributo a uma mulher que se via como um cisne e uma borboleta, elegante e capaz de se reinventar. A coleção VEVA reflete essa mesma teatralidade cenográfica e ousadia, explorando criativamente os elementos decorativos do período áureo da Art Déco e a metamorfose dos motivos, a riqueza dos materiais e o ecletismo de diferentes culturas, fruto de viagens por diferentes continentes e do contacto com várias etnias, artistas modernos e pensamentos reformistas. Mergulhamos numa nova sensibilidade com tons quentes e naturais, através do profundo respeito pelos materiais e da exaltação da natureza e do meio ambiente, sensibilidade esta, associada ao toque, à exploração da sensação e da espiritualidade. Tecemos e bordamos em conjunto essas histórias construindo conexões e preservando a riqueza de uma identidade cultural que se quer intemporal.

Venha connosco e deixe-se seduzir pela sensualidade de VEVA.












## SAVOIR-FAIRE

SAVOIR-FAIRE is a luxurious Art Déco design embroidered fabric, adorned in rich tones through intricate decorative embroidery stitches. Crafted on an elegant cotton satin fabric, it's the epitome of luxury elevating each space with this regal touch. This fabric symbolizes the true concept of savoir-faire in all spheres of Veva's glamorous life.



A photograph of an interior space viewed through a doorway. The doorway is framed by white architectural moldings. On the left, a chair with a textured, golden-brown fabric and a curved backrest is visible. On the right, a tall, narrow curtain with a repeating geometric pattern in shades of orange, red, and black hangs. The floor is made of dark wood. The walls are white with decorative paneling.

[1]  
**MÉRIDIENNE**  
Col. 05 Cognac

[2]  
**SAVOIR-FAIRE**  
Col. 02 Maxims Doré

## ENSEMBLES VELVET

ENSEMBLES VELVET is a beautiful cotton and linen velvet with a high, soft pile. This fabric was specially developed to combine with FRISSON VELVET and BELLE ÉPOQUE VELVET jacquard velvets and is suitable for upholstery, decoration, and curtains due to its high resistance to abrasion and light. This smooth, soft velvet is available in 7 exquisite colours.

[1]  
**FRISSON VELVET**  
Col. 03 Cognac

[2]  
**ENSEMBLES VELVET**  
Col. 03 Cognac

[3]  
**MÉRIDIENNE**  
Col. 05 Cognac

[4]  
**SAVOIR-FAIRE**  
Col. 03 Golden Era

[5]  
**FANTAISIE**  
Col. 02 Maxims Doré









[1]  
FANTASIE  
Col. 02 Maxims Doré







[1]  
**FRISSON VELVET**  
Col. 07 Marine Blue





[2]  
**FRISSON VELVET**  
Col. 07 Marine Blue

[3]  
**GARRET EASY CLEAN FR**  
Col. 08 Ochre

[4]  
**LA VIE**  
Col. 02 Maxims Doré

[5]  
**MÉRIDIENNE**  
Col. 02 Milky White

“In the morning you are an atom-satellite of  
the cosmos and at night you are a solar  
fulcrum that attracts and shines light.”

Antero de Quental in  
LEITÃO DE BARROS, Joana. VEA, ed. Lisboa: Oficina do Livro, 2022.

“Le matin, vous êtes un atomo-satellite du cosmos et la nuit, vous êtes un point d’appui solaire qui attire et fait briller la lumière.”  
“Por la mañana eres un átomo-satélite del cosmos y por la noche eres un punto de apoyo solar que atrae e irradia luz.”  
“De manhã és atomo-satélite do cosmos e à noite és fulcro solar que atrai e espadana luz.”

## MÉRIDIENNE

MÉRIDIENNE is a very elegant but very natural piece dyed chenille. This fabric has a very soft lined structure with a timeless *côtelé* look and is available in 12 exquisite colours.

[1]  
**MÉRIDIENNE**  
Col. 12 Ink Blue





## CHRONIQUES DE VOYAGE

CHRONIQUES DE VOYAGE is a beautiful and stylised foliage embroidered fabric that celebrates form and colour. This special cotton ground fabric has voluminous stitches making the surface of this all over design an impressive one with a handmade feel. Inspired by Veva's adventurous travel chronicles through bucolic fields with vegetation in warm and natural tones.

## HAUT DÉSSERT

HAUT DÉSSERT is a satin jacquard fabric that represents a dynamic and harmonious rhythm almost like a musical score. Its geometric graphic elements inspired by the repetition of the triangle represents the connection to the land in a moment of continuous ancestral creation. The pyramid motif is very present in this fabric, invoking the Egyptian travels, contrasting with the elegance of satin as a noble material. It is available in 6 very natural shades.

[1]  
**CHRONIQUES DE VOYAGE**  
Col. 02 Spring Earth

[2]  
**HAUT DÉSSERT**  
Col. 06 Blue Universe









[1]  
**HAUT DÉSSERT**  
Col. 06 Blue Universe





[2]  
**CHRONIQUES DE VOYAGE**  
Col. 02 Spring Earth

## VOLUPTÉ DE LA VIE

VOLUPTÉ DE LA VIE is a delicate sheer with a linen look and an all-over design of finely embroidered stylized flowers. This light, transparent fabric has a wonderful drape for curtains. The elegant look is enhanced by the soft shine of the delicate, large-scale embroidered floral motifs. This rich embroidered fabric exalts the feminine in an intense and refined way, creating extremely pleasant sensations.

[1]  
**MÉRIDienne**  
Col. 01 Natural White

[2]  
**VOLUPTÉ DE LA VIE**  
Col. 01 Natural White









[1]  
**MÉRIDIENNE**  
Col. 01 Natural White





[2]  
**VOLUPTÉ DE LA VIE**  
Col. 01 Natural White



[1]  
LA VIE  
Col. 01 Retro Light



## VOYAGEUR

VOYAGEUR is a piece dyed jacquard fabric with an irregular serpentine texture functioning as a faux plain and double face. This fabric is ideal for adding that touch of irreverence to your upholstery pieces and is available in very natural colours.



[2]  
VOYAGEUR  
Col. 02 Sand







“Party, dream, spectacle, grandeur.”

*“Fiesta, sueño, espectáculo, grandeza.”*

“Fête, rêve, spectacle, grandeur.”

*“Festa, sonho, espetáculo, grandiosidade.”*

Veva de Lima in

LEITÃO DE BARROS, Joana. *VEVA*. ed. Lisboa: Oficina do Livro, 2022.







[2]  
**LA VIE**  
Col. 01 Retro Light

[3]  
**HAUT DÉSERT**  
Col. 02 Greige

[4]  
**VOYAGEUR**  
Col. 02 Sand

[5]  
**TAILLEUR**  
Col. 02 Greige



[1]  
TAILLEUR  
Col. 02 Greige





[2]  
MÉRIDIENNE  
Col. 03 Linen

## LA VIE

LA VIE is an exquisite embroidery with an abstract ethnic design that comes to life through multi-coloured minimalist shapes and intricate stitches on a soft linen ground. This fabric is inspired by experiences from different travels and cultures with the combination of abstract motifs resulting from the deconstruction of Veva's most beloved elements: the Butterfly and the Swan. The rich textures combined with the geometry of the shapes result in an elegant design symbolizing metamorphosis and elegance; It is perfect for modern and contemporary interior spaces.









[1]  
**LA VIE**  
Col. 03 Golden Era





## INFLUENCE

INFLUENCE is an embroidered fabric with a lined look that combines different embroidered stitches with the bouclé, giving it a huge three-dimensionality. Its sheer and light ground contrasts with the geometric shapes of the embroidery, creating a balanced rhythm between the delicate and the frantic of the shapes like Veva's life in the influential social circles that brought together the philosophers and modernist thinkers' crème de la crème.

## TAILLEUR

TAILLEUR is a jacquard with multi-coloured bouclé yarns, which gives it a very elegant and natural look like the famous tweed tailored suits from the beginning of the 20th century. This fabric with a modern twist and is extremely soft is available in 6 must-have colours.

[1]  
**INFLUENCE**  
Col. 01 Natural White

[2]  
**TAILLEUR**  
Col. 01 White Sand







[1]  
**INFLUENCE**  
Col. 01 Natural White





[2]  
**TAILLEUR**  
Col. 01 White Sand

## BELLE ÉPOQUE VELVET

BELLE ÉPOQUE VELVET is a jacquard velvet fabric with cotton and linen pile. This velvet has a geometric design inspired by the golden age with the curved shapes typical of the Art Déco period. The cut-pile technique combined with piece dyeing process accentuates its dynamism and glamour, so characteristic of this era. This exquisite velvet can be easily combined with the FRISSON VELVET micro design and ENSEMBLES smooth plain velvet and is available in 7 wonderful colours.

## FRISSON VELVET

FRISSON VELVET is a jacquard velvet fabric with cotton and linen pile. This velvet has a dynamic geometric micro motif inspired by parties and gatherings from the beginning of the 20<sup>th</sup> century, full of frenetic rhythm, theatrical representations, and poetry. The buzz is evident in the cut-pile and three-dimensionality of this piece dyed irresistible velvet. This velvet with a textured and irreverent look due to its use of color is available in 7 glamorous shades.

[1]  
**BELLE ÉPOQUE VELVET**  
Col. 01 White Cotton

[2]  
**FRISSON VELVET**  
Col. 01 White Cotton







[1]  
**BELLE ÉPOQUE VELVET**  
Col. 01 White Cotton





[2]  
**FRISSON VELVET**  
Col. 01 White Cotton



[1]  
**HAUT DÉSSERT**  
Col. 03 Terracotta Hues

[2]  
**HAUT DÉSSERT**  
Col. 04 Chocolate Mix





[3]  
**HAUT DÉSERT**  
Col. 03 Terracotta Hues

[4]  
**HAUT DÉSERT**  
Col. 04 Chocolate Mix

[5]  
**CHRONIQUES DE VOYAGE**  
Col. 01 Autumn Dream





[1]  
**CHRONIQUES DE VOYAGE**  
Col. 01 Autumn Dream





[2]  
**HAUT DÉSSERT**  
Col. 03 Terracotta Hues

## TWEEDY

TWEEDY is a 100% recycled fabric with a very structured effect, specially designed for upholstery and with a high martindale resistance. It has a slightly melange effect in some of the tones colourways and is available in 14 refined colour shades. It has a luxurious look and soft feel while respecting the environment.







[1]  
**TWEEDY**  
Col. 03 Ecrú

## FANTAISIE

FANTAISIE is a cotton satin fabric with a contemporary twist on the graphic element of the damask. This luxurious embroidered cotton fabric focuses on a harmonious mix of tradition and modernity, as it has a modern aesthetic, subtly and metaphorically exalting the feminine and timelessness.

[1]  
**TAILLEUR**  
Col. 03 Terracotta Hues

[2]  
**FANTAISIE**  
Col. 01 Retro Light









[1]  
**TAILLEUR**  
Col. 03 Terracotta Hues





[2]  
**FANTASIE**  
Col. 01 Retro Light



# VEVA

*Collection*

"I cannot tremble, I do not want to deceive, I do not deign to weaken."  
"No puedo temblar, no quiero engañar, no me digno a debilitarme."  
"Não posso tremer, não quero enganar, não me digno a enfraquecer."

“trembler ne peux, tromper ne veux, flâichir ne daigne.”

Veva de Lima in  
LEITÃO DE BARROS, Joana. *VEVA*. ed. Lisboa: Oficina do Livro, 2022.



## BELLE ÉPOQUE VELVET

L. 140 cm



Col. 01  
White Cotton  
T192890001



Col. 02  
Twill Taupe  
T192890002



Col. 03  
Cognac  
T192890003



Col. 04  
Terracotta  
T192890004



Col. 05  
Burgundy Wine  
T192890005



Col. 06  
Sage Green  
T192890006

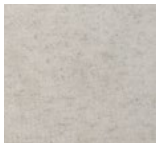


Col. 07  
Marine Blue  
T192890007

COMPOSITION: PILE: 55% CO + 45% LI | WEIGHT: 640 g/ml | PILLING: 4/5 | LIGHTFASTNESS: 5 | MARTINDALE: 45.000 CC | RAPPORT: H35 x V26 cm.

## ENSEMBLES VELVET

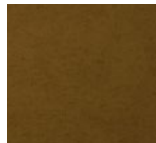
L. 140 cm



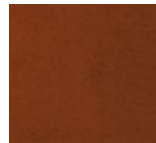
Col. 01  
White Cotton  
T192880001



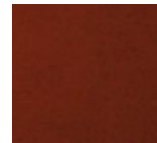
Col. 02  
Twill Taupe  
T192880002



Col. 03  
Cognac  
T192880003



Col. 04  
Terracotta  
T192880004



Col. 05  
Burgundy Wine  
T192880005



Col. 06  
Sage Green  
T192880006

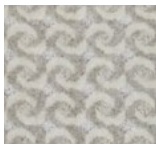


Col. 07  
Marine Blue  
T192880007

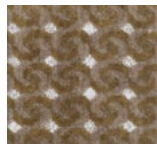
COMPOSITION: PILE: 50% CO + 50% LI | WEIGHT: 590 g/ml | PILLING: 5 | LIGHTFASTNESS: 5 | MARTINDALE: 45.000 CC.

## FRISSON VELVET

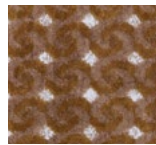
L. 140 cm



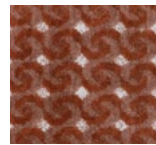
Col. 01  
White Cotton  
T192870001



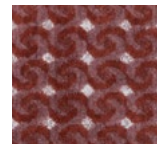
Col. 02  
Twill Taupe  
T192870002



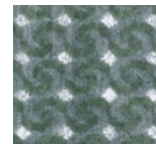
Col. 03  
Cognac  
T192870003



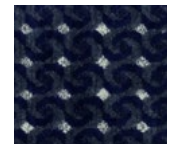
Col. 04  
Terracotta  
T192870004



Col. 05  
Burgundy Wine  
T192870005



Col. 06  
Sage Green  
T192870006

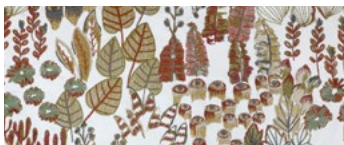


Col. 07  
Marine Blue  
T192870007

COMPOSITION: PILE: 65% CO + 35% LI | WEIGHT: 760 g/ml | PILLING: 5 | LIGHTFASTNESS: 3/4 | MARTINDALE: 45.000 CC | RAPPORT: H2,5 x V2,5 cm.

## CHRONIQUES DE VOYAGE

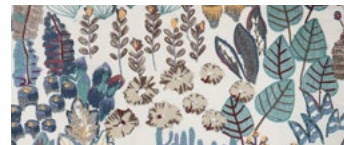
L. 136 (use 130 cm)



Col. 01  
Autumn Dream  
T192930001



Col. 02  
Spring Earth  
T192930002



Col. 03  
River Reflections  
T192930003

COMPOSITION: 100% CO (Embroidery: 100% PL) | WEIGHT: 731 g/ml | LIGHTFASTNESS: 4 | MARTINDALE: 30.000 CC | RAPPORT: H65 x V76 cm | BCI | OEKO-TEX 100 | GOTS.

## FANTAISIE

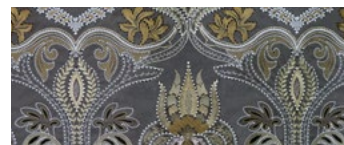
L. 142 (use 128 cm)



Col. 01  
Retro Light  
T192920001



Col. 02  
Maxims Doré  
T192920002



Col. 03  
Golden Era  
T192920003

COMPOSITION: 100% CO (Embroidery: 80% VI + 20% PL) | WEIGHT: 580 g/ml | LIGHTFASTNESS: 4 | MARTINDALE: 30.000 CC | RAPPORT: H64 x V77 cm | BCI | OEKO-TEX 100 | GOTS.

## HAUT DÉSSERT

L. 140 cm



Col. 01  
Linen Shades  
T193020001



Col. 02  
Greige  
T193020002



Col. 03  
Terracotta Hues  
T193020003



Col. 04  
Chocolate Mix  
T193020004



Col. 05  
Green Leaves  
T193020005



Col. 06  
Blue Universe  
T193020006

COMPOSITION: 62% PL + 19% CO + 13% VI + 6% LI | WEIGHT: 520 g/ml | PILLING: 3/4 | LIGHTFASTNESS: >4 | MARTINDALE: 45.000 CC | RAPPORT: H3,5 x V3 cm | FR: BS 5852 Source 0 + CALL TB117 PASS. BS 5852 Source 1 Under Request.

## INDIGÈNE

L. 138 cm



Col. 01  
Natural Hues  
T193010001



Col. 02  
Autumn Dream  
T193010002



Col. 03  
Bleu Universe  
T193010003

COMPOSITION: 48% CO + 20% PL + 15% LI + 12% VI + 2% PC + 2% WO + 1% PA | WEIGHT: 970 g/ml | PILLING: 3/4 | LIGHTFASTNESS: 4/5 | MARTINDALE: 45.000 CC | RAPPORT: H16,5 x V33 cm | FR: BS 5852 Source 0 + CALL TB117 PASS. BS 5852 Source 1 Under Request.

## LA VIE

L. 139 (use 128 cm)



Col. 01  
Retro Light  
T192910001



Col. 02  
Maxims Doré  
T192910002



Col. 03  
Golden Era  
T192910003

COMPOSITION: 100% LI (Embroidery: 80% VI + 20% PL) | WEIGHT: 528 g/ml | LIGHTFASTNESS: 4 | MARTINDALE: 30.000 CC | RAPPORT: H64 x V59 cm | OEKO-TEX 100 | GOTS.

## L'ESPRIT AFRICAIN

L. 140 cm



Col. 01  
Serengeti Gris  
T193030001



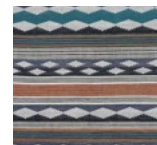
Col. 02  
Nuances de Dune  
T193030002



Col. 03  
Plage Africaine  
T193030003



Col. 04  
Lin Marin  
T193030004



Col. 05  
Bleu Zanzibar  
T193030005

COMPOSITION: 30% VI + 29% CO + 27% PL + 14% LI | WEIGHT: 650 g/ml | PILLING: 3/4 | LIGHTFASTNESS: 4/5 | MARTINDALE: 45.000 CC | RAPPORT: H7,5 x V39,5 cm | FR: BS 5852 Source 0 + CALL TB117 PASS. BS 5852 Source 1 Under Request.

## SAVOIR-FAIRE

L. 147 (use 133 cm)



Col. 01  
Retro Light  
T192900001



Col. 02  
Maxims Doré  
T192900002



Col. 03  
Golden Era  
T192900003

COMPOSITION: 100% CO (Embroidery: 80% VI + 20% PL) | WEIGHT: 566 g/ml | LIGHTFASTNESS: 4 | MARTINDALE: 30.000 CC | RAPPORT: H33,5 x V19,5 cm | BCI | OEKO-TEX 100 | GOTS.



## MÉRIDIENNE

L. 140 cm



Col. 01  
Natural White  
T192840001



Col. 02  
Milky White  
T192840002



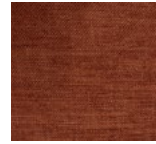
Col. 03  
Linen  
T192840003



Col. 04  
Golden Linen  
T192840004



Col. 05  
Cognac  
T192840005



Col. 06  
Canyon Clay  
T192840006



Col. 07  
Taupe  
T192840007



Col. 08  
Khaki Green  
T192840008



Col. 09  
Aquarelle  
T192840009



Col. 10  
Blue Haze  
T192840010



Col. 11  
Steel Gray  
T192840011



Col. 12  
Ink Blue  
T192840012

COMPOSITION: 52% VI + 42% CO + 6% LI | WEIGHT: 1000 g/ml | PILLING: 3/4 | LIGHTFASTNESS: 4/5 | MARTINDALE: 45.000 CC | FR: BS 5852 Source 0 + CALL TB117 PASS. BS 5852 Source 1 Under Request.

## TAILLEUR

L. 140 cm



Col. 01  
White Sand  
T192850001



Col. 02  
Greige  
T192850002



Col. 03  
Terracotta Hues  
T192850003



Col. 04  
Mixed Canvas  
T192850004

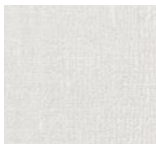


Col. 05  
Blue Universe  
T192850005

COMPOSITION: 44% CO + 36% PL + 11% PC + 4% LI + 2% WO + 2% VI + 1% PA | WEIGHT: 770 g/ml | PILLING: 3/4 | LIGHTFASTNESS: 4/5 | MARTINDALE: 45.000 CC | FR: BS 5852 Source 0 + CALL TB117 PASS. BS 5852 Source 1 Under Request.

## VOYAGEUR

L. 138 cm



Col. 01  
Natural White  
T192860001



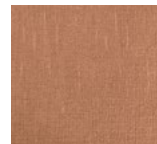
Col. 02  
Sand  
T192860002



Col. 03  
Linen  
T192860003



Col. 04  
Taupe  
T192860004



Col. 05  
Clay  
T192860005



Col. 06  
Khaki Green  
T192860006



Col. 07  
Silver Gray  
T192860007



Col. 08  
Stone Blue  
T192860008



Col. 09  
Chocolate  
T192860009

COMPOSITION: 81% CO + 19% PL | WEIGHT: 430 g/ml | PILLING: 3/4 | LIGHTFASTNESS: >4 | DOUBLE FACE | MARTINDALE: 45.000 CC | FR: BS 5852 Source 0 + CALL TB117 PASS. BS 5852 Source 1 Under Request.

## INFLUENCE

L. 297 (use 283 cm)



Col. 01  
Natural White  
T192950001

COMPOSITION: 63% CO + 37% PL (Embroidery: 100% PC) | WEIGHT: 579 g/ml | LIGHTFASTNESS: 4 | RAPPORT: H69,5 x V59 cm | BCI | OEKO-TEX 100 | GOTS.

## VOLUPTÉ DE LA VIE

L. 295 (use 283 cm)



Col. 01  
Natural White  
T192940001

COMPOSITION: 63% CO + 37% PL (Embroidery: 80% VI + 20% PL) | WEIGHT: 649 g/ml | LIGHTFASTNESS: 4 | RAPPORT: H72 x V79 cm | BCI | OEKO-TEX 100 | GOTS

## JENNY

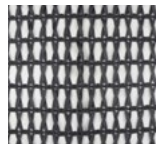
L. 300 + 5 cm



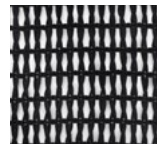
Col. 01  
Natural White  
T193000001



Col. 02  
Linen  
T193000002



Col. 03  
Steel Gray  
T193000003



Col. 04  
Black  
T193000004



Detail Finish  
Both ends  
Selvedges 2,5 cm

COMPOSITION: 100% PL | WEIGHT: 1037 g/ml | LIGHTFASTNESS: 4 | RAPPORT: H3,5 x V3 cm.

## ECO FR WLB

L. 300 cm



Col. 01  
Natural White  
T192970001



Col. 02  
Milkshake  
T192970002



Col. 03  
Parchment  
T192970003



Col. 04  
Linen  
T192970004



Col. 05  
Dove  
T192970005



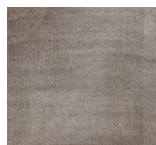
Col. 06  
Blush Rose  
T192970006



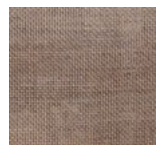
Col. 07  
Silver Gray  
T192970007



Col. 08  
Stone Gray  
T192970008



Col. 09  
Dark Taupe  
T192970009



Col. 10  
Canyon Sunset  
T192970010



Col. 11  
Riverside Blue  
T192970011



Col. 12  
Steel Gray  
T192970012

COMPOSITION: 84% REC PL FR + 16% PL FR | WEIGHT: 245 g/ml | LIGHTFASTNESS: 4 | FR: M1 | GLOBAL RECYCLED STANDARD | OEKO-TEX 100 | WITH LEAD BAND.



## LIMA WLB

L. 320 cm



Col. 01  
Natural White  
T192980001



Col. 02  
Oyster  
T192980002



Col. 03  
Silver Gray  
T192980003

COMPOSITION: 100% PL | WEIGHT: 390 g/ml | LIGHTFASTNESS: 4 | WITH LEAD BAND.

## LULU WLB

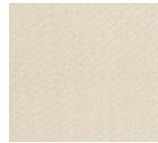
L. 300 cm



Col. 01  
Pure White  
T192990001



Col. 02  
Ivory  
T192990002



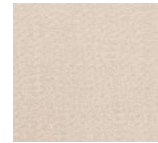
Col. 03  
Milkshake  
T192990003



Col. 04  
Silver Gray  
T192990004



Col. 05  
Dove  
T192990005



Col. 06  
Linen  
T192990006

COMPOSITION: 100% PL | WEIGHT: 279 g/ml | LIGHTFASTNESS: 4 | WITH LEAD BAND.

## GLORIA FR

L. 330 cm



Col. 01  
Pure White  
T192690001



Col. 02  
Natural White  
T192690002



Col. 03  
Off-White  
T192690003



Col. 04  
Calico  
T192690004



Col. 05  
Linen  
T192690005



Col. 06  
Quarry  
T192690006



Col. 07  
Soft Taupe  
T192690007



Col. 08  
Earth Stone  
T192690008



Col. 09  
Beaver  
T192690009



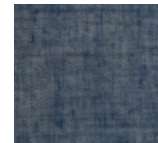
Col. 10  
Dusk Blue  
T192690010



Col. 11  
Ocean Blue  
T192690011



Col. 12  
Teal  
T192690012



Col. 13  
Navy Blue  
T192690013

COMPOSITION: 100% RECYCLED PL FR | WEIGHT: 248 g/ml | LIGHTFASTNESS: 5 | FR: BS5867-2 type B + EN 13773 + M1 + B1 | GLOBAL RECYCLED STANDARD.

## MARIAS FR

L. 320 cm



Col. 01  
Natural White  
T192680001



Col. 02  
Rice  
T192680002



Col. 03  
Dove  
T192680003



Col. 04  
Smoke  
T192680004



Col. 05  
Linen  
T192680005

COMPOSITION: 100% RECYCLED PL FR | WEIGHT: 275 g/ml | LIGHTFASTNESS: 5 | FR: BS5867-2 type B + EN 13773 + M1 + B1 | GLOBAL RECYCLED STANDARD.

## ALVORADA BLACKOUT FR

L. 320 cm



Col. 01  
Pure White  
T192760001



Col. 02  
Natural White  
T192760002



Col. 03  
Sand  
T192760003



Col. 04  
Beige  
T192760004



Col. 05  
Oatmeal  
T192760005



Col. 06  
Linen  
T192760006



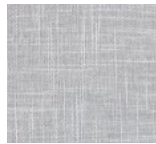
Col. 07  
Moleskin  
T192760007



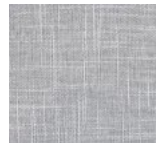
Col. 08  
Chestnut  
T192760008



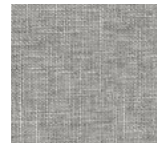
Col. 09  
Seal Gray  
T192760009



Col. 10  
Breeze  
T192760010



Col. 11  
Dove  
T192760011



Col. 12  
Silver Gray  
T192760012



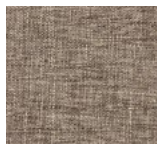
Col. 13  
Thundercloud  
T192760013



Col. 14  
Parchment  
T192760014



Col. 15  
Greige  
T192760015



Col. 16  
Stone Gray  
T192760016



Col. 17  
Sea Breeze  
T192760017



Col. 18  
Duck Egg  
T192760018



Col. 19  
Turquoise  
T192760019



Col. 20  
Navy Blue  
T192760020



Col. 21  
Steel Gray  
T192760021



Col. 22  
Anthracite  
T192760022

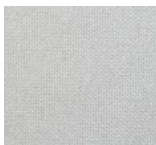


Col. 23  
Charcoal  
T192760023

COMPOSITION: 100% PL FR | WEIGHT: 1312 g/ml | LIGHTFASTNESS: 5 | FR: BS5867-2 type B + EN 13773 + M1 + B1 | THERMAL RESISTANCE CERTIFICATE.

## DOUBLE FACE BLACKOUT FR

L. 300 cm



Col. 01  
Natural White  
T192770001



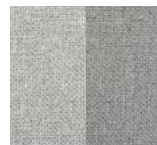
Col. 02  
Parchment  
T192770002



Col. 03  
Linen  
T192770003



Col. 04  
Greige  
T192770004



Col. 05  
Light Gray  
T192770005



Col. 06  
Moleskin  
T192770006



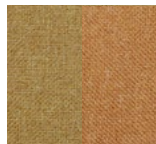
Col. 07  
Sea Fog  
T192770007



Col. 08  
Petrol Blue  
T192770008



Col. 09  
Garden Green  
T192770009



Col. 10  
Cinnamon  
T192770010



Col. 11  
Anthracite  
T192770011

COMPOSITION: 100% PL FR | WEIGHT: 1065 g/ml | LIGHTFASTNESS: 5 | FR: EN 13773 Class 1 + BS5867-2 type B + IMO 7 + NFPA 701 + B1 | SOUND ABSORPTION CERTIFICATE.



## NIGHTDREAM BLACKOUT FR

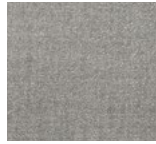
L. 315 cm



Col. 01  
Natural White  
T192750001



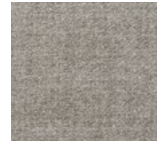
Col. 02  
Oyster  
T192750002



Col. 03  
Dove  
T192750003



Col. 04  
Silver Gray  
T192750004



Col. 05  
Greige  
T192750005



Col. 06  
Linen  
T192750006



Col. 07  
Dark Taupe  
T192750007



Col. 08  
Blue Haze  
T192750008



Col. 09  
Navy Blue  
T192750009



Col. 10  
Spring Green  
T192750010



Col. 11  
Forest Green  
T192750011



Col. 12  
Honey  
T192750012



Col. 13  
Terracotta  
T192750013



Col. 14  
Anthracite  
T192750014

COMPOSITION: 100% RECYCLED PL FR | WEIGHT: 1055 g/ml | LIGHTFASTNESS: 5 | FR: BS5867-2 type B + IMO 7 + B1 | GLOBAL RECYCLED STANDARD.

## LILARGE

L. 325/330 cm



Col. 01  
Natural White  
T192780001



Col. 02  
White Cream  
T192780002



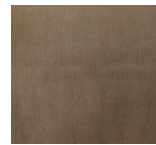
Col. 03  
Milkshake  
T192780003



Col. 04  
Linen  
T192780004



Col. 05  
Nomad Beige  
T192780005



Col. 06  
Taupe  
T192780006

COMPOSITION: 100% LI | WEIGHT: 792 g/ml | LIGHTFASTNESS: 4 | AZO FREE.

## LINACE

L. 315/320 cm



Col. 01  
Natural White  
T192790001



Col. 02  
White Cream  
T192790002



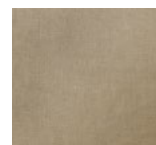
Col. 03  
Oyster Linen  
T192790003



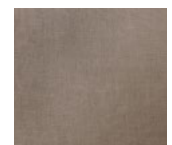
Col. 04  
Nomad Beige  
T192790004



Col. 05  
Milkshake  
T192790005



Col. 06  
Natural Linen  
T192790006



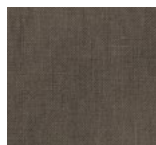
Col. 07  
Linen Raffia  
T192790007



Col. 08  
Light Gray  
T192790008



Col. 09  
Stone Gray  
T192790009



Col. 10  
Taupe  
T192790010

COMPOSITION: 100% LI | WEIGHT: 742 g/ml | LIGHTFASTNESS: 4/5 | AZO FREE.

## ALMO FR

L. 140 cm



Col. 01  
Natural White  
T192740001



Col. 02  
Linen  
T192740002



Col. 03  
Greige  
T192740003



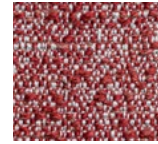
Col. 04  
Sunflower  
T192740004



Col. 05  
Sunset Mix  
T192740005



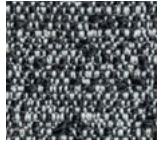
Col. 06  
Terracotta  
T192740006



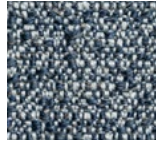
Col. 07  
Pomegranate  
T192740007



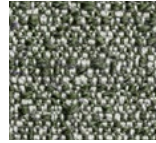
Col. 08  
Silver Gray  
T192740008



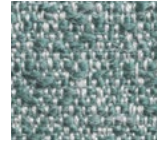
Col. 09  
Charcoal  
T192740009



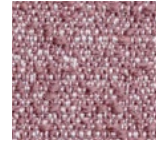
Col. 10  
Denim Blue  
T192740010



Col. 11  
Moss Green  
T192740011



Col. 12  
Aquarelle  
T192740012



Col. 13  
Pink Nude  
T192740013

COMPOSITION: 78% PL + 10% PC + 7% LI + 5% WO | WEIGHT: 665 g/ml | PILLING: 4 | LIGHTFASTNESS: 4/5 | MARTINDALE: 100.000 CC | FR: BS 5852 SOURCE 0 + NFPA 260 + EN1021-1.

## BICAS WATER REPELLENT FR

L. 140 cm

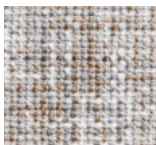


Col. 01  
Natural Nude  
T192700001

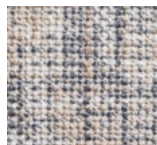
COMPOSITION: 100% PL | WEIGHT: 525 g/ml | PILLING: 4 | LIGHTFASTNESS: 4 | MARTINDALE: 40.000 CC | FR: BS 5852 SOURCE 0 + NFPA 260 + EN1021-1.

## CHIADO FR

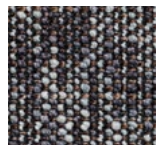
L. 140 cm



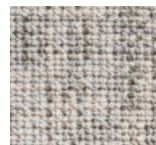
Col. 01  
Linen Gray  
T192820001



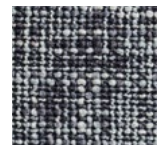
Col. 02  
Greige  
T192820002



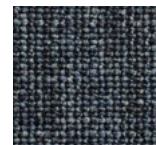
Col. 03  
Iceland  
T192820003



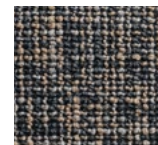
Col. 04  
Gray  
T192820004



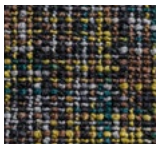
Col. 05  
Anthracite Mix  
T192820005



Col. 06  
Dark Denim  
T192820006



Col. 07  
Linen Blue  
T192820007



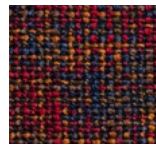
Col. 08  
Night Lights  
T192820008



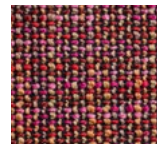
Col. 09  
Mixed Leaves  
T192820009



Col. 10  
Navy Plum  
T192820010



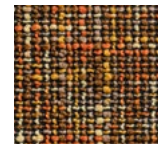
Col. 11  
Navy Cherry  
T192820011



Col. 12  
Cherry Blossom  
T192820012



Col. 13  
Autumn Mix  
T192820013



Col. 14  
Golden Mix  
T192820014

COMPOSITION: 100% PL | WEIGHT: 686 g/ml | PILLING: 4 | LIGHTFASTNESS: 4 | MARTINDALE: 40.000 CC | FR: BS 5852 SOURCE 0 + NFPA 260 + EN1021-1 | REACH COMPLIES.



## CAMPO WATER REPELLENT FR

L. 140 cm



Col. 01  
Natural White  
T192710001



Col. 02  
Milky White  
T192710002



Col. 03  
Greige  
T192710003



Col. 04  
Taupe  
T192710004



Col. 05  
Mocha  
T192710005



Col. 06  
Linen  
T192710006



Col. 07  
Honey  
T192710007



Col. 08  
Ochre  
T192710008



Col. 09  
Terracotta  
T192710009



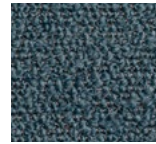
Col. 10  
Ruby Wine  
T192710010



Col. 11  
Gray  
T192710011



Col. 12  
Anthracite  
T192710012



Col. 13  
Denim Blue  
T192710013



Col. 14  
Navy Blue  
T192710014



Col. 15  
Moss Green  
T192710015



Col. 16  
Aquarelle  
T192710016



Col. 17  
Ice Blue  
T192710017



Col. 18  
Ash Rose  
T192710018

COMPOSITION: 90% PL + 10% PC | WEIGHT: 686 g/ml | PILLING: 4 | LIGHTFASTNESS: 5 | MARTINDALE: 145.000 CC | FR: BS 5852 SOURCE 0 + NFPA 260 + EN1021-1.

## CHALET FR

L. 140 cm



Col. 01  
Natural White  
T192720001



Col. 02  
Linen  
T192720002



Col. 03  
Coffee  
T192720003



Col. 04  
Taupe  
T192720004



Col. 05  
Honey  
T192720005



Col. 06  
Terracotta  
T192720006



Col. 07  
Passion Red  
T192720007



Col. 08  
Ruby Wine  
T192720008



Col. 09  
Silver Gray  
T192720009



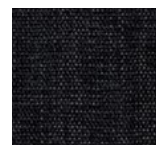
Col. 10  
Anthelope Gray  
T192720010



Col. 11  
Stone Gray  
T192720011



Col. 12  
Steel Gray  
T192720012



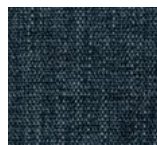
Col. 13  
Charcoal  
T192720013



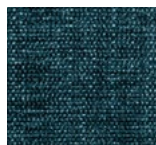
Col. 14  
Ice Blue  
T192720014



Col. 15  
Denim Blue  
T192720015



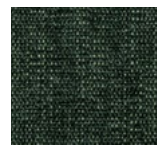
Col. 16  
Indigo Blue  
T192720016



Col. 17  
Ocean Blue  
T192720017



Col. 18  
Moss Green  
T192720018



Col. 19  
Forest Green  
T192720019



Col. 20  
Aquarelle  
T192720020



Col. 21  
Dusty Rose  
T192720021

COMPOSITION: 100% PL | WEIGHT: 560 g/ml | PILLING: 4 | LIGHTFASTNESS: 4/5 | MARTINDALE: 50.000 CC | FR: BS 5852 SOURCE 0 + NFPA 260 + EN1021-1.

## GARRET EASY CLEAN FR

L. 138 cm



Col. 01  
Natural White  
T192960001



Col. 02  
Calcaire  
T192960002



Col. 03  
White Sand  
T192960003



Col. 04  
Mist  
T192960004



Col. 05  
Linen Gray  
T192960005



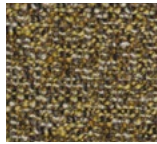
Col. 06  
Greige  
T192960006



Col. 07  
Linen  
T192960007



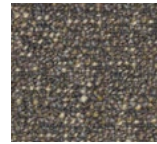
Col. 08  
Ochre  
T192960008



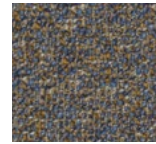
Col. 09  
Oak  
T192960009



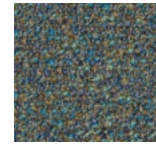
Col. 10  
Rustic Gold  
T192960010



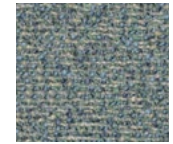
Col. 11  
Mushroom  
T192960011



Col. 12  
Riverbed  
T192960012



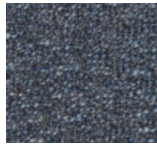
Col. 13  
Ocean  
T192960013



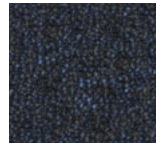
Col. 14  
Riverside Blue  
T192960014



Col. 15  
Blue Horizon  
T192960015



Col. 16  
Denim Blue  
T192960016



Col. 17  
Marine Blue  
T192960017



Col. 18  
Graphite  
T192960018



Col. 19  
Marble  
T192960019

COMPOSITION: 51% REC PL + 49% PL | WEIGHT: 809 g/ml | PILLING: 4 | LIGHTFASTNESS: 6 | MARTINDALE: 40.000 CC | FR: BS 5852 Source 0 + CALL 117 + NFPA 260 + MVSS 302 PASS, BS 5852 Source 1 Under Request. | GLOBAL RECYCLED STANDARD | OEKO-TEX 100 | PFC FREE.

## GRACE WATER REPELLENT FR

L. 140 cm



Col. 01  
Natural White  
T192810001



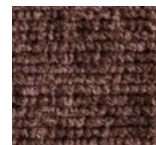
Col. 02  
Milkshake  
T192810002



Col. 03  
Linen  
T192810003



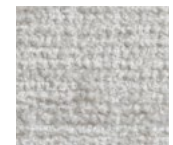
Col. 04  
Taupe  
T192810004



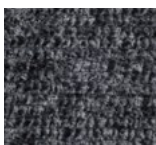
Col. 05  
Ash Rose  
T192810005



Col. 06  
Natural Nude  
T192810006



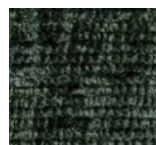
Col. 07  
Light Gray  
T192810007



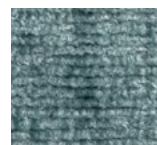
Col. 08  
Steel Gray  
T192810008



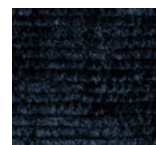
Col. 09  
Anthracite  
T192810009



Col. 10  
Moss Gray  
T192810010



Col. 11  
Blue Haze  
T192810011



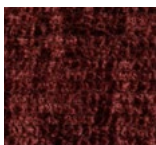
Col. 12  
Navy Blue  
T192810012



Col. 13  
Denim Blue  
T192810013



Col. 14  
Terracotta Dust  
T192810014



Col. 15  
Ruby Wine  
T192810015



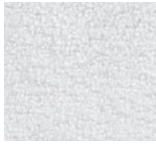
Col. 16  
Honey  
T192810016

COMPOSITION: 100% PL | WEIGHT: 490 g/ml | PILLING: 4/5 | LIGHTFASTNESS: 5 | MARTINDALE: 80.000 CC | FR: BS 5852 SOURCE 0 + NFPA 260 + EN1021-1. | REACH COMPLIES.



## KELLY FR

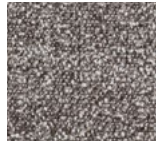
L. 140 cm



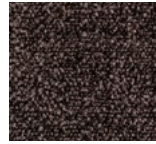
Col. 01  
Pure White  
T193040001



Col. 02  
Linen  
T193040002



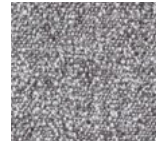
Col. 03  
Taupe  
T193040003



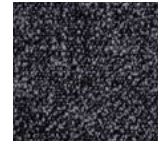
Col. 04  
Mocha  
T193040004



Col. 05  
Silver Gray  
T193040005



Col. 06  
Stone Gray  
T193040006



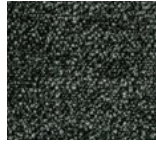
Col. 07  
Anthracite  
T193040007



Col. 08  
Black  
T193040008



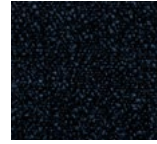
Col. 09  
Moss Green  
T193040009



Col. 10  
Forest Green  
T193040010



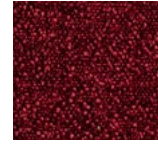
Col. 11  
Aquarelle  
T193040011



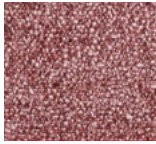
Col. 12  
Navy Blue  
T193040012



Col. 13  
Denim Blue  
T193040013



Col. 14  
Passion Red  
T193040014



Col. 15  
Antique Rose  
T193040015



Col. 16  
Terracotta  
T193040016



Col. 17  
Honey  
T193040017



Col. 18  
Marigold  
T193040018

COMPOSITION: 100% PL | WEIGHT: 595 g/ml | PILLING: 4/5 | LIGHTFASTNESS: 3/4 | MARTINDALE: 80.000 CC | FR: BS 5852 SOURCE 0 + NFPA 260 + EN1021-1 | REACH COMPLIES | OEKO-TEX 100.

## MILY FR

L. 140 cm



Col. 01  
Natural White  
T192830001



Col. 02  
Milkshake  
T192830002



Col. 03  
Greige  
T192830003



Col. 04  
Taupe  
T192830004



Col. 05  
Chocolate  
T192830005



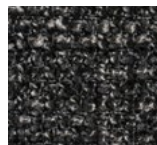
Col. 06  
Linen  
T192830006



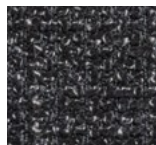
Col. 07  
Rose Blush  
T192830007



Col. 08  
Silver Gray  
T192830008



Col. 09  
Stone Gray  
T192830009



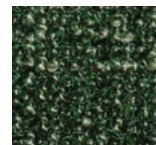
Col. 10  
Anthracite  
T192830010



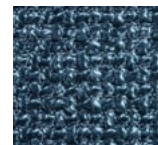
Col. 11  
Camouflage Green  
T192830011



Col. 12  
Aquarelle  
T192830012



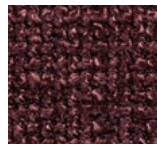
Col. 13  
Forest Green  
T192830013



Col. 14  
Denim Blue  
T192830014



Col. 15  
Indigo Blue  
T192830015



Col. 16  
Burgundy Wine  
T192830016



Col. 17  
Pommegranate  
T192830017

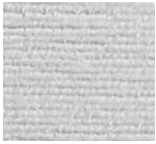


Col. 18  
Honey  
T192830018

COMPOSITION: 100% PL | WEIGHT: 609 g/ml | PILLING: 4/5 | LIGHTFASTNESS: 4/5 | MARTINDALE: 100.000 CC | FR: BS 5852 SOURCE 0 + NFPA 260 + EN1021-1 | REACH COMPLIES | OEKO-TEX 100.

## SPATIA WATER REPELLENT FR

L. 140 cm



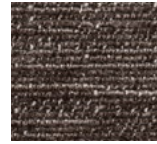
Col. 01  
Pure White  
T192730001



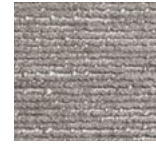
Col. 02  
Natural White  
T192730002



Col. 03  
Dove  
T192730003



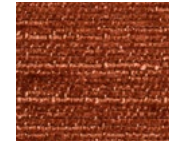
Col. 04  
Taupe  
T192730004



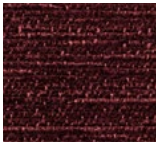
Col. 05  
Warm Gray  
T192730005



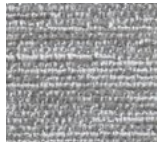
Col. 06  
Honey  
T192730006



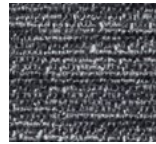
Col. 07  
Terracotta  
T192730007



Col. 08  
Ruby Wine  
T192730008



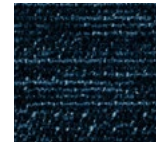
Col. 09  
Silver Gray  
T192730009



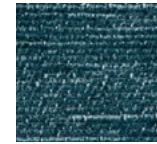
Col. 10  
Steel Gray  
T192730010



Col. 11  
Charcoal  
T192730011



Col. 12  
Indigo Blue  
T192730012



Col. 13  
Blue Haze  
T192730013



Col. 14  
Moss Green  
T192730014



Col. 15  
Ash Rose  
T192730015

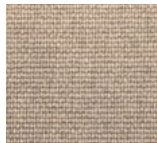
COMPOSITION: 100% PL | WEIGHT: 560 g/ml | PILLING: 4/5 | LIGHTFASTNESS: 5 | MARTINDALE: 40.000 CC | FR: BS 5852 SOURCE 0 + NFPA 260 + EN1021-1.

## TWEEDY

L. 140 cm



Col. 01  
Natural White  
T193060001



Col. 02  
Beige  
T193060002



Col. 03  
Linen  
T193060003



Col. 04  
Light Earth  
T193060004



Col. 05  
Taupe  
T193060005



Col. 06  
Duck Egg  
T193060006



Col. 07  
Stone Gray  
T193060007



Col. 08  
Black Marble  
T193060008

COMPOSITION: 100% PL | WEIGHT: 910 g/ml | PILLING: 5 | LIGHTFASTNESS: 4/5 | MARTINDALE: 84.000 CC | FR: BS 5852 CRIB 5 BACKING AVAILABLE UPON REQUEST | OEKO-TEX 100 | GLOBAL RECYCLED STANDARD









# Participation Participação

ALDECO | [www.aldeco.pt](http://www.aldeco.pt)

Pags. armchairs 16 | 17 | screens 17 | armchair 41 | 43.

ARQUITETO ANTÓNIO AROSO

Pags. chaise long 09 | 10 | 11.

DUISTT | [duistt.com](http://duistt.com)

Pags. pouff 09 | 12 | 13 | armchair 25 | 26 | 29 | 30 | 31 | table lamp & armchair 32 | 33  
| 34 | 35 | stool 37 | 38 | side tables 45 | 47 | 48 | 49 | 51 armchairs & side table 52 | 53.

HMD FURNITURE | [hmdfurniture.com](http://hmdfurniture.com)

Pags. armchairs 19 | 21 | 22 | 45 | 46 | 47.

JMS | MORE CONTRACT | [www.jms.pt](http://www.jms.pt)

armchairs

PELCORTE | [pelcorte.com](http://pelcorte.com)

Pags. sofas 05 | 12 | 13 | 33 | 35 | armchairs 48 | 49 | 51 | 71 | 72 | 55 | 56.

## Place to visit Local a visitar

CASA SÃO ROQUE CENTRO DE ARTE | [www.casasroque.art/](http://www.casasroque.art/)

 WALLDECO  
Wallpapers & Wallcoverings



  
ALDECO



**NORTE2020**  
PROGRAMA OPERACIONAL REGIONAL DO NORTE

PORTUGAL  
**2020**

 UNIÃO EUROPEIA  
Fundo Europeu de  
Desenvolvimento Regional

[www.aldeco.pt](http://www.aldeco.pt)

Production and Design by Aldeco - Interior Fabrics | Photography by Paulo Carvalho  
No part of this publication may be reproduced without prior permission Aldeco - Interior Fabrics

# Aldeco World

## Where to find us



### HEAD OFFICE:

Rua da Saibreira 265/269  
Parque Industrial de Grijó  
4415-538 Grijó  
Vila Nova de Gaia  
Portugal  
Tel.: (+351) 227 537 230  
(national landline call)  
Fax.: (+351) 227 531 062  
E-mail: [aldecogeral@aldeco.pt](mailto:aldecogeral@aldeco.pt)

### PORTO SHOWROOM

Galerias Douro Foz  
Rua do Ouro, 508  
4150-553 Porto  
Portugal  
Tel.: (+351) 226 079 410  
(national landline call)  
Fax: (+351) 226 079 419  
E-mail: [aldecoporto@aldeco.pt](mailto:aldecoporto@aldeco.pt)

### LISBOA SHOWROOM

Restelo Business Center  
Av. Ilha da Madeira, 35-K-3ºB  
1400-376-Lisboa  
Tel.: (+351) 213 951 540  
(national landline call)  
Fax: (+351) 213 951 541  
E-mail: [aldecolisboa@aldeco.pt](mailto:aldecolisboa@aldeco.pt)

### ALGARVE SHOWROOM:

Av. Vilamoura XXI,  
Ed. Portal de Vilamoura,  
Bloco B, r/c, Lj. A  
8125-406 Quarteira  
Portugal  
Tel.: (+351) 289 323 245  
(national landline call)  
Fax: (+351) 289 323 246  
E-mail: [aldecoalgarve@aldeco.pt](mailto:aldecoalgarve@aldeco.pt)

### MADRID SHOWROOM:

Barrio de Salamanca  
Calle de Lagasca, 132  
28006 Madrid  
Tel.: (+34) 914 879 563  
(national spanish landline call)  
Spain  
E-mail: [abitaredealdeco@aldeco.pt](mailto:abitaredealdeco@aldeco.pt)









WWW.ALDECO.PT